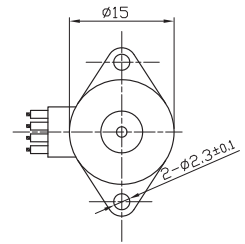
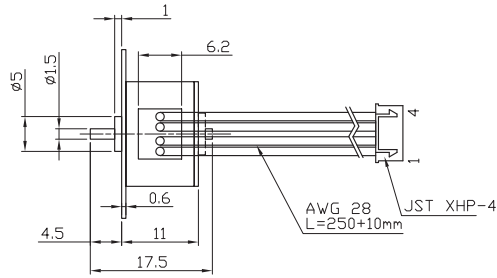
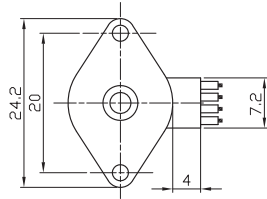


PM Stepper MOTOR

15PM12 High Torque Hybrid



Characteristics

STEP ANGLE
1,8°

STEP ANGLE ACCURACY
± 8%

INSULATION CLASS
E

AMBIENT TEMPERATURE
-20°C +50°C

TEMP. RISE
80°C MAX (RATED CURRENT, 2 PHASE ON)

INSULATION RESISTANCE
100 M OHM MIN. 500 VDC

DIELECTRIC STRENGTH
500 VAC FOR ONE MINUTE

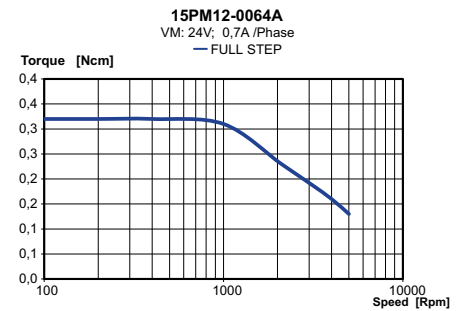
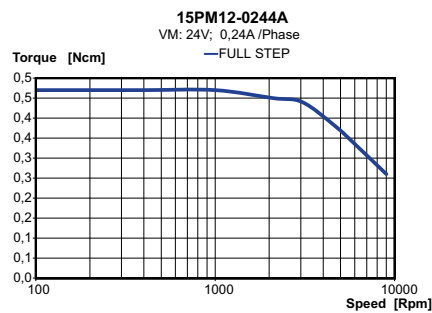
MAX RADIAL FORCE
2 N (3 MM FROM FRONT FLANGE)

MAX AXIAL FORCE
1 N

Specification

Model		15PM12-0244A	15PM12-0064A
1 RATED VOLTAGE	V	12	12
2 CURRENT/PHASE	A	0,24	0,065
3 RESISTANCE/PHASE	Ω	50	190
4 INDUCTANCE/PHASE	mH	9	37
5 HOLDING TORQUE	Nm	0,0035	0,0032
6 ROTOR INERTIA	g-cm ²	1,0X10 ⁻⁷	1,0X10 ⁻⁷
7 WEIGHT	KG	0,012	0,012
8 NUMBER OF LEADS	Nº	4	4

Speed vs. Torque Characteristics



Connection

PIN N°	COLOR	GAUGE	FUNCTION
1	WHITE	UL1430 AWG30	PHASE A
2	RED	UL1430 AWG30	PHASE A-
3	BLUE	UL1430 AWG30	PHASE B
4	YELLOW	UL1430 AWG30	PHASE B-