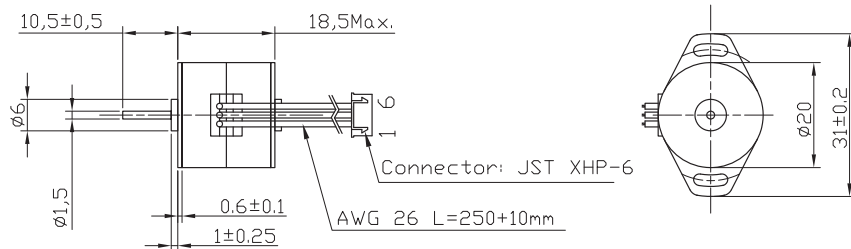
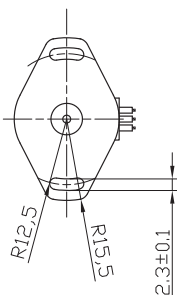


# PM Stepper MOTOR

20PM18 High Torque Hybrid



## Characteristics

STEP ANGLE

1,8°

STEP ANGLE ACCURACY

± 5%

INSULATION CLASS

B

AMBIENT TEMPERATURE

-20°C +50°C

TEMP. RISE

80°C MAX (RATED CURRENT, 2 PHASE ON)

INSULATION RESISTANCE

100 M OHM MIN. 500 VDC

DIELECTRIC STRENGTH

500 VAC FOR ONE MINUTE

MAX RADIAL FORCE

2 N (3 MM FROM FRONT FLANGE)

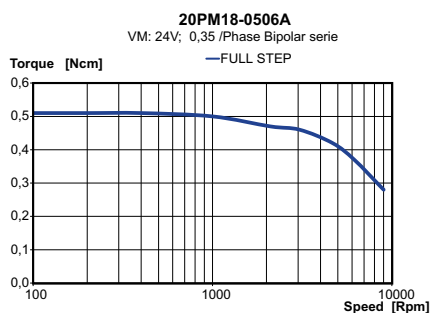
MAX AXIAL FORCE

1 N

## Specification

Model	20PM18-0506A		
1 RATED VOLTAGE	V	5	
2 CURRENT/PHASE	A	0,5	
3 RESISTANCE/PHASE	Ω	10	
4 INDUCTANCE/PHASE	mH	1,85	
5 HOLDING TORQUE	Nm	0,005	
6 ROTOR INERTIA	KG-M <sup>2</sup>	1,0X10 <sup>-7</sup>	
7 WEIGHT	KG	0,026	
8 NUMBER OF LEADS	Nº	6	

## Speed vs. Torque Characteristics



## Connection

PIN N°	COLOR	GAUGE	FUNCTION
1	WHITE	UL1430 AWG30	PHASE A
2	RED	UL1430 AWG30	PHASE A-
3	BLUE	UL1430 AWG30	PHASE B
4	YELLOW	UL1430 AWG30	PHASE B-
5	BLACK	UL1430 AWG30	COMM A
6	BROWN	UL1430 AWG30	COMM B