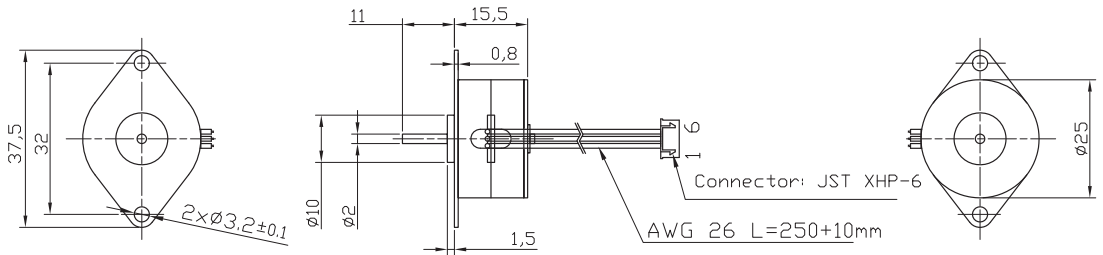


# PM Stepper MOTOR

## 25PM15 High Torque Hybrid



### Characteristics

STEP ANGLE  
15°

STEP ANGLE ACCURACY  
± 8%

INSULATION CLASS  
B

AMBIENT TEMPERATURE  
-20°C +50°C

TEMP. RISE  
80°C MAX (RATED CURRENT, 2 PHASE ON)

INSULATION RESISTANCE  
100 M OHM MIN. 500 VDC

DIELECTRIC STRENGTH  
500 VAC FOR ONE MINUTE

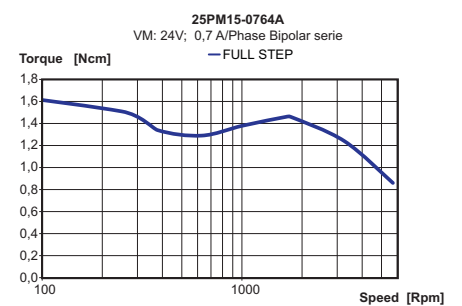
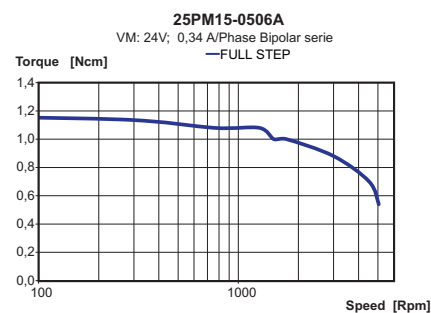
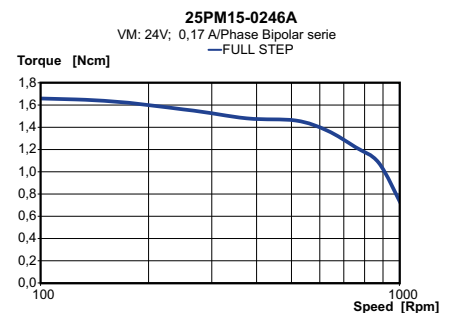
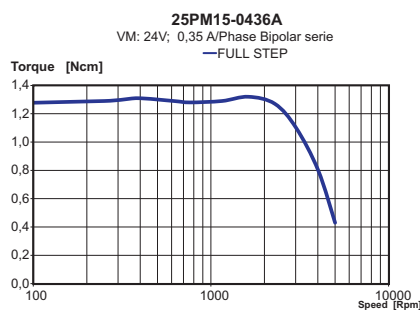
MAX RADIAL FORCE  
3 N (3 MM FROM FRONT FLANGE)

MAX AXIAL FORCE  
1,5 N

### Specification

Model		25PM15-0436A	25PM15-0246A	25PM15-0506A	25PM15-0764A
1 RATED VOLTAGE	V	5	12	5	3,8
2 CURRENT/PHASE	A	0,43	0,24	0,5	0,76
3 RESISTANCE/PHASE	Ω	11,5	50	10	5
4 INDUCTANCE/PHASE	mH	2,3	3	2	3
5 HOLDING TORQUE	Nm	0,01	0,016	0,014	0,01
6 ROTOR INERTIA	KG-M <sup>2</sup>	1,0X10 <sup>-7</sup>	1,0X10 <sup>-7</sup>	1,0X10 <sup>-7</sup>	1,0X10 <sup>-7</sup>
7 WEIGHT	Kg	0,036	0,036	0,036	0,036
8 NUMBER OF LEADS	N°	6	6	6	4

### Speed vs. Torque Characteristics



### Connection

PIN N°	COLOR	GAUGE	FUNCTION
1	WHITE	UL1430 AWG30	PHASE A
2	RED	UL1430 AWG30	PHASE A-
3	BLUE	UL1430 AWG30	PHASE B
4	YELLOW	UL1430 AWG30	PHASE B-
5	BLACK	UL1430 AWG30	COMM A
6	BROWN	UL1430 AWG30	COMM B

